



ESCAPE

By Staunch Development

Birds are beautiful, strong yet fragile creatures. They vary among breeds but most share one thing in common which is migration.

When birds lack resources they migrate, similar to the Lebanese people's behavior. Since they feel entrapped with chaos, surrounded by sewage; water and electricity shortage, they flee abroad.

Escape gives the Lebanese a chance to experience the lifestyle they have always dreamt of without leaving their nest, right here at the pearl of the Lebanese coast. We no longer have to Escape away from home, rather, escape becomes home.

Escape is a village, based on a utopic vision, where everything we are missing in Lebanon is present behind its fences; from 24/7 electricity, water & security services, to serenity, calmness, an ecofriendly environment



25 MIN AWAY FROM
BEIRUT

DOWNTOWN
BEIRUT

20 MIN AWAY FROM
Rafik Hariri Airport

AIRPORT

1 MIN AWAY

Several Beach Resorts In The Area

5 MIN AWAY FROM
SAIDA

SIDON

ESCAPE

45 MIN AWAY FROM
NABTIEH

Nabtieh



HOW TO GO THERE



AMENITIES

| Exclusive Padel court





| **Exclusive GYM**



| Guest Parking Lot

| Public Garden





24/7

**& FRESH WATER,
& ELECTRICITY**



**SECURITY
24/7**



VILLA RIVA

Inspired by the graceful coastal bird Riva, known for its freedom, poise, and natural connection to the shoreline, Villa Riva embodies a lifestyle where serenity meets sophistication. Overlooking the sea, it offers a harmonious retreat defined by open horizons, gentle breezes, and timeless elegance. A sanctuary designed for those who seek beauty, tranquility, and an enduring connection with nature.



VILLA RIVA

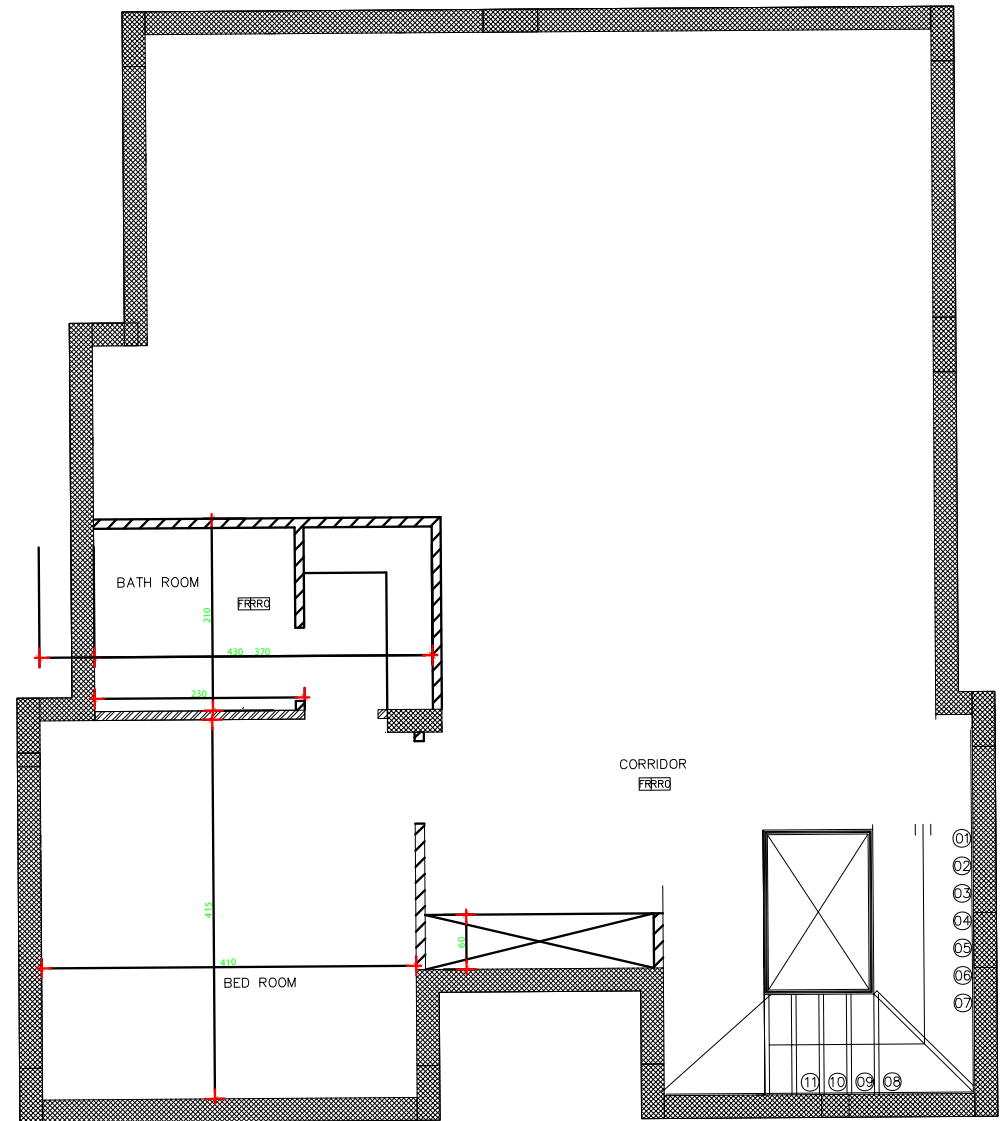
69



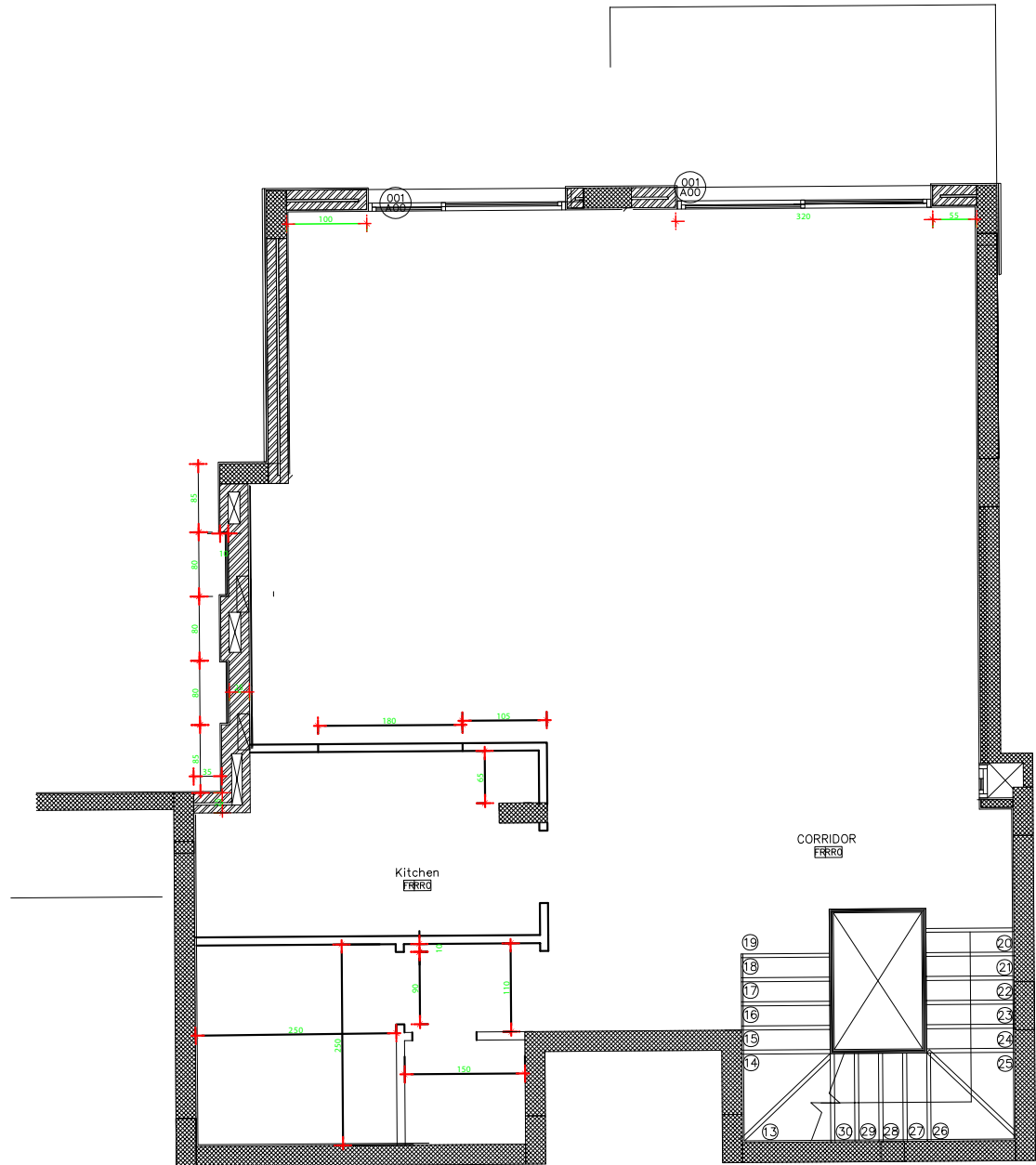


Basement 2 Plan (133 m2)

- Bedroom
- Bathroom
- Corridor
- Open space



Villa 69
BASEMENT 2



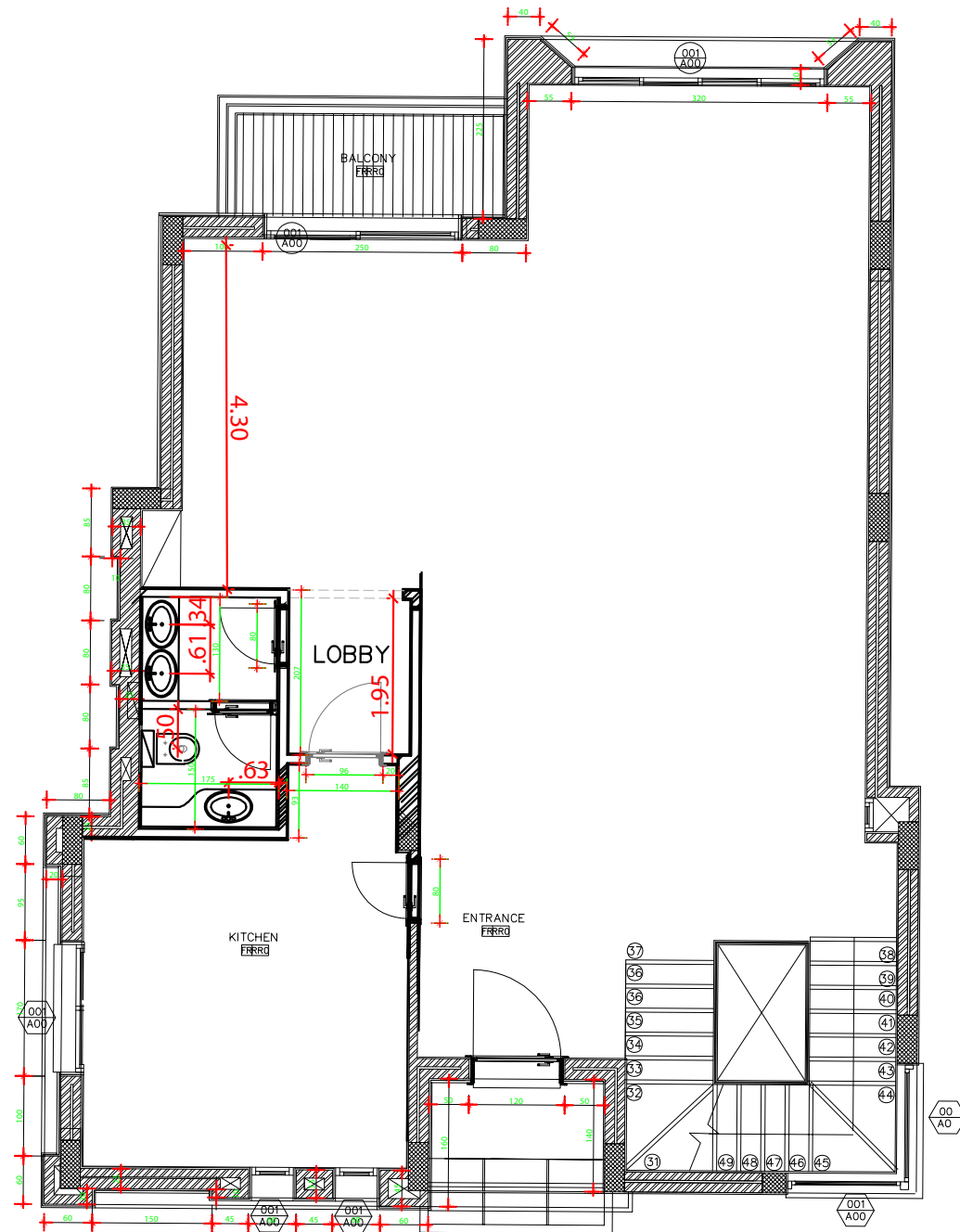
Basement 1 Plan(117 m2)

Kitchen
Corridor
Open space

Villa 69
BASEMENT 1

Ground Floor Plan (135 m2)

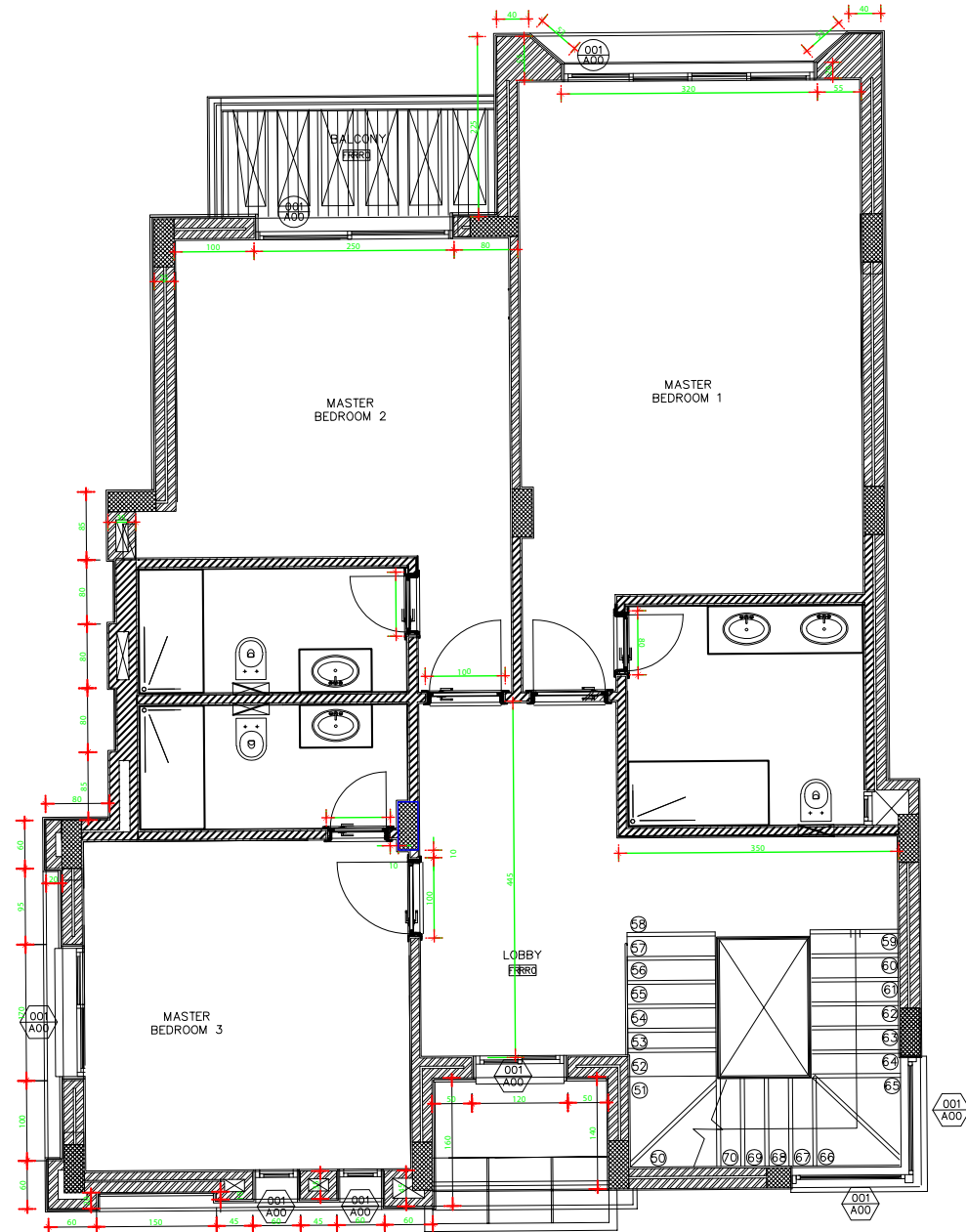
- Entrance
- Salon
- Dining
- Kitchen
- Guest Wc
- Open space



Villa 69
Ground floor

First Floor Plan (128m2)

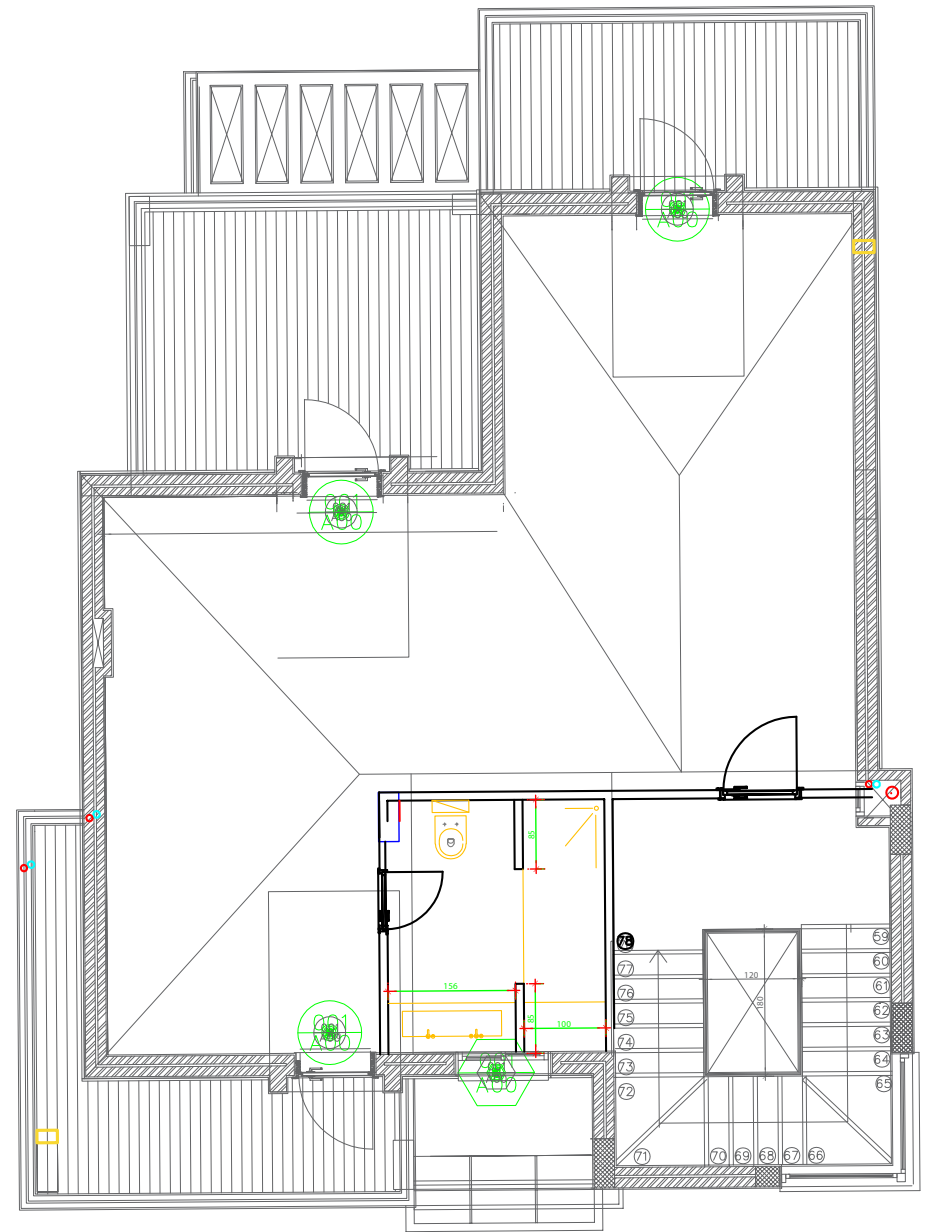
- Lobby
- Master Bedroom with Bathroom
- Bedroom 1 with Bathroom
- Bedroom 2 with Bathroom



Villa 69
First floor

Attic floor Plan (93 m2)

Bathroom
Open space



Villa 69
Roof floor

VILLA NO.	Land area/m ²	Garden area/m ²	Floor	M ²
VILLA (69)	425	290	Basement 2	133
			Basement 1	117
			Ground Floor	135
			First Floor	128
			Attic Floor	93
			Total	606

SPECIFICATION

General feature of the project

- A Resort-Style project
- A toned-to-perfection fitness Gym
- A restaurant and cafe
- Beautifully Landscaped Environment
- Lush Green Manicured Gardens
- Wide paved walkways with trees
- Water Bodies and Green Parks
- Drive-in Parking Spaces
- A 7/24 security guard agency
- A 7/24 Electricity System
- A 7/24 filtered water supply

Technical villas specifications

- Exterior Natural Stone cladding on exposed facades as indicated by the Architect
- Interior and exterior walls Non-structural smooth finished concrete walls or masonry walls
- External walls : Double masonry walls to provide best thermal protection
- Polypropylene for embedded & exposed pipes inside the units
Drainage and Sewage: UPVC piped or equivalent
 - High-quality sanitary fixtures: PAINI – ITALIAN Made (7 years Warranty)
 - High-quality sanitary wares: AL-Forsan (10 years Warranty - European Specifications)
- For basement walls and roof to be protected by waterproofing membranes
- Heating / AC (Optional): Decorative A/C split units
 - Heating: Gaz boiler, Aluminum radiators in reception, living, and bedrooms.
 - Aluminum towel dryer in master bedrooms
- Aluminum Sidem 2000 original, Double glazing clear
- Wall Finishes: Smooth paint (3 coats of putty & 3 coats of paint: tinol equivalent)
- Kitchens: Resin countertops with splash backs or equivalent
High and low cabinets: MDF high-gloss cabinets
- Flooring:
 - 1-Reception area: First choice Italian or Spanish ceramic with marble texture or equivalent
 - 2-Bathrooms and Kitchen: First choice high-quality European ceramics or porcelain or equivalent
 - 3-Bedrooms: First choice Italian or Spanish ceramic with wood texture or equivalent
- Private Indoor Jacuzzi (Optional):
Jacuzzi lounge glass volume
- Wood Works:
Entrance decor: Solid wood frame and natural wood leaf
Interior decor: Painted or veneered wood
- Swimming pool (Optional): Each Villa will have a swimming pool in its private garden with WPC teak wood finish tanning area
- TV Network: European standard, Centralized collective TV network for the whole project
- Electrical reservations: For Home Automation (Optional)
- Security cameras connected to the guard room
- Wires and cables: Liban Cables
- Videophones, Remote controlled overhead security gate
- Electrical Accessories: Vemar or equivalent
- Parking: For 2 cars for each Villa
- Back Up Power
- Centralized power plant for the project